

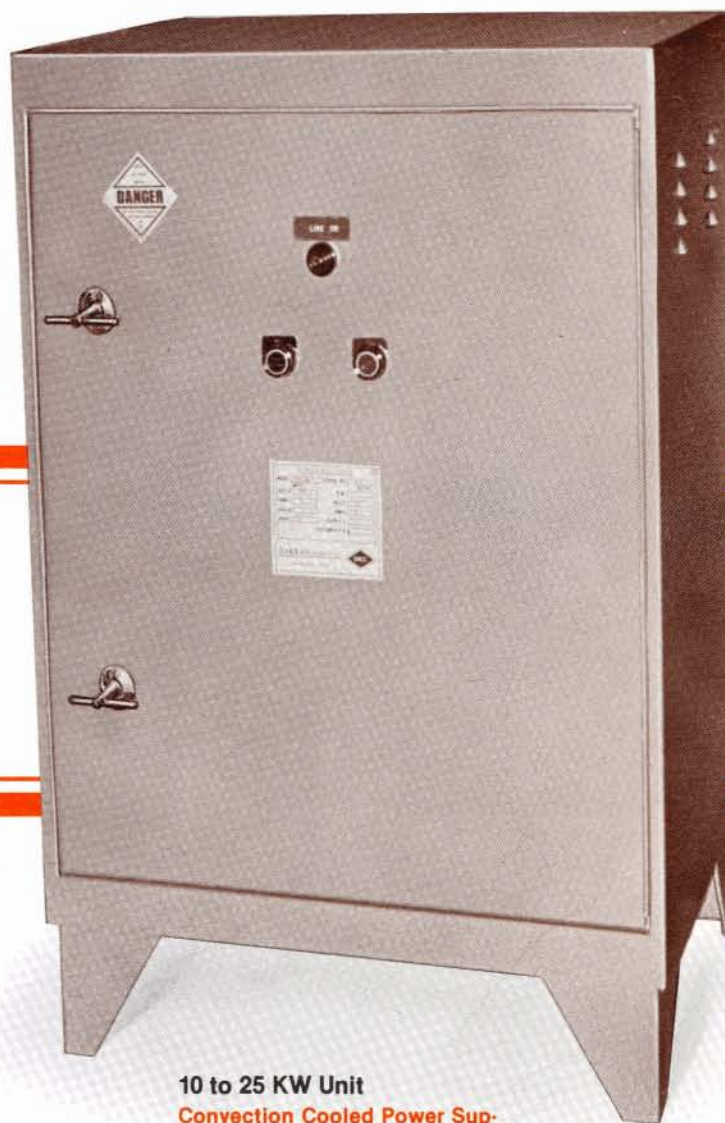
lifting magnet & industrial

DC power supplies

Darrah unregulated lifting magnet DC power supplies provide surge suppression protection which clamps transient voltages when the magnet is de-energized by the controller. The power supply can be furnished for voltage inputs of 208, 380, 460, and 575 at 50 or 60 Hz. Available outputs include 230V (standard); also 125 and 250V. Because the cold current of the magnet is 30% to 50% greater than the operating current, the power supply must be sized for the cold current 25° C rating of the magnet.

Standard Features: Fast-acting fuses between the transformer secondary and the bridge rectifier • Silicon Diodes in the rectifier bridge • Selenium surge suppressor, sized accordingly, across the DC output • DC output fuses • NEMA one, convection cooled enclosures • One to 7.5 KW to be wall-mounted; 10 to 55 KW to be freestanding.

Options - Linestarter, Line Overload Heaters • 120V Control Circuit • AC Line Circuit Breaker • Start/Stop Push Buttons • Door-Mounted "Power On" Light • Door-Mounted Voltmeter and Ammeter • NEMA 3R Enclosure.



10 to 25 KW Unit

Convection Cooled Power Supply with 460V 60 Hz AC input and 230V DC output.

Available in 1 to 55 KW sizes.

Unregulated DC Power Supply Specifications

Full Load Efficiency	90-96%
Power Factor	92-95%
Voltage Regulation	10% to 100% Load, 8% or less
Full Wave Output Ripple	4.6%
Light Load Loss	1.5% of KW

Ratings

100% continuous load in 40° C ambient preceded and followed by 125% rated load for 2 hours, or 200% rated load for 10 sec.



Darrah Electric Company, Inc.

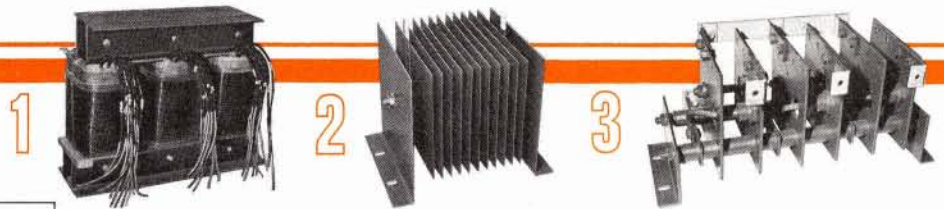
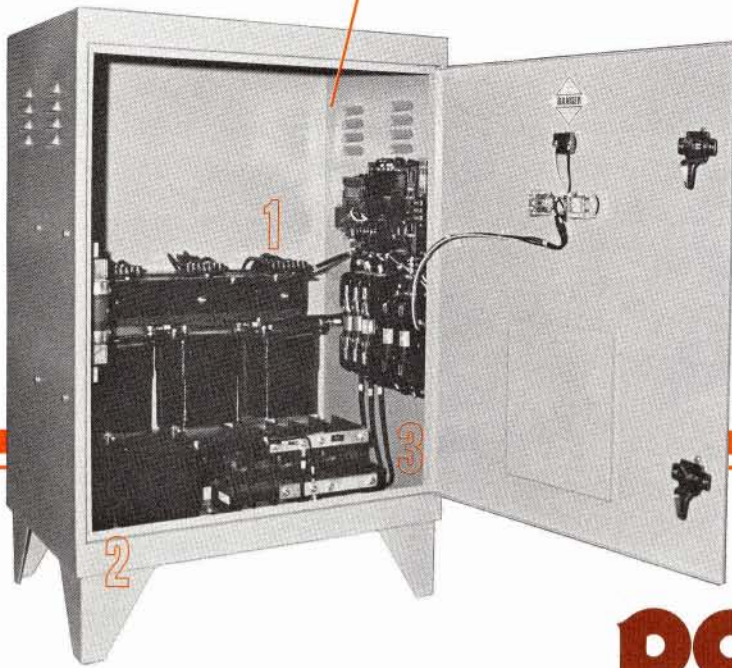
5914 Merrill Avenue • Cleveland, OH 44102 • (216) 631-0912

Complete fused protection

Darrah Unregulated Power Supplies provide the most efficient means to supply DC power to on-the-spot locations. Due to their high efficiency, power factor, and low maintenance, they are ideal for rotary and mercury tube conversions and such applications as cranes, elevators, machine tools, magnetic chucks, synchronous motor field exciters, welding supplies, dockside DC power, and anywhere that unregulated (within 8%) constant potential is needed.

Darrah Regulated Power Supplies - Designed with silicon-controlled rectification with solid state control. Available to supply voltage control (current limiting) and current control (voltage limiting). Rated to maintain control within $\pm 2\%$.

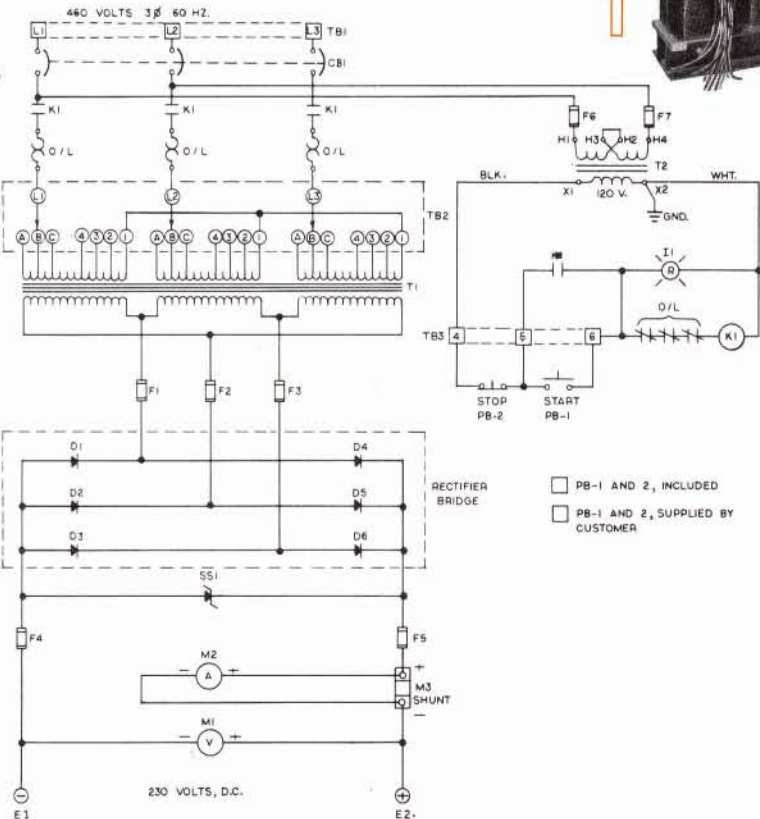
heavy-duty unregulated DC power supplies



Isolation transformers are Class H and are dipped and baked twice, assuring maximum insulation values. Each is tested to provide continuous nameplate rating.

Darrah selenium DC surge suppressors are produced to OEM specifications. They supply the widest range of diode transient voltage protection available.

Continuous-duty, rugged plate heat sink mounted silicon diode units are coded and dated to show test reliability.



MODEL	KW	Output Amperes At 230 Volts DC	Enclosure Dimensions	Enclosure Mounting	Approximate Net Weight
7340-1-M	1	4.4	24 x 20 x 10 ^{5/8}	Wall	150
7340-1.5-M	1.5	6.5	24 x 20 x 10 ^{5/8}	Wall	160
7340-2-M	2	8.7	24 x 20 x 10 ^{5/8}	Wall	180
7340-3-M	3	13.0	24 x 20 x 10 ^{5/8}	Wall	190
7340-5-M	5	22.0	30 x 24 x 16	Wall	200
7340-7.5-M	7.5	33.0	30 x 24 x 16	Wall	250
7340-10-M	10	43	42 x 28 x 24	Floor	350
7340-15-M	15	65	42 x 28 x 24	Floor	425
7340-20-M	20	87	42 x 28 x 24	Floor	500
7340-25-M	25	109	42 x 28 x 24	Floor	550
7340-30-M	30	130	54 x 32 x 26	Floor	650
7340-35-M	35	152	54 x 32 x 26	Floor	700
7340-40-M	40	174	54 x 32 x 26	Floor	750
7340-50-M	50	217	54 x 32 x 26	Floor	875
7340-55-M	55	239	54 x 32 x 26	Floor	925

For pricing information, please supply: 1) input voltage and frequency • 2) input line equipment desired (see options) • 3) DC output voltage • 4) magnet cold current rating @ 25° C • 5) Cabinet NEMA style 1 or 3R • 6) Additional options • 7) Quantity

Note: Service, parts replacement, and rebuilding are available on existing equipment. Call for cost-saving details.



Darrah Electric Company, Inc.

5914 Merrill Avenue • Cleveland, OH 44102 • (216) 631-0912